

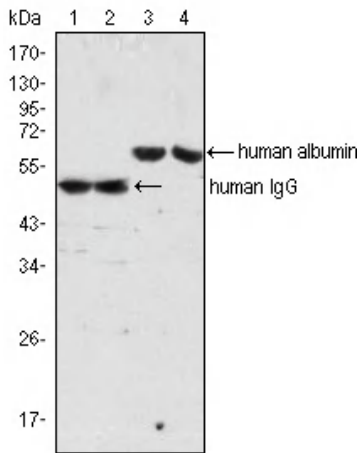


Human IgG Monoclonal Antibody

Catalog No	YP-Ab-04443
Isotype	IgG
Reactivity	Human
Applications	WB;ELISA
Gene Name	
Protein Name	
Immunogen	Human IgG was isolated from human sera and purified by chromatography.
Specificity	Human IgG Monoclonal Antibody detects Human IgG protein.
Formulation	Purified antibody in PBS containing 0.03% sodium azide.
Source	Monoclonal, Mouse
Purification	Affinity purification
Dilution	Western Blot: 1/500 - 1/2000. ELISA: 1/10000. Not yet tested in other applications.
Concentration	1 mg/ml
Purity	≥90%
Storage Stability	-20°C/1 year
Synonyms	
Observed Band	
Cell Pathway	
Tissue Specificity	
Function	
Background	
matters needing attention	Avoid repeated freezing and thawing!
Usage suggestions	This product can be used in immunological reaction related experiments. For more information, please consult technical personnel.



Products Images



Western Blot analysis using Human IgG Monoclonal Antibody (lane 1, 2) and ALB Monoclonal Antibody (lane 3, 4) against human serum (lane 1, 3) and plasma (lane 2, 4).